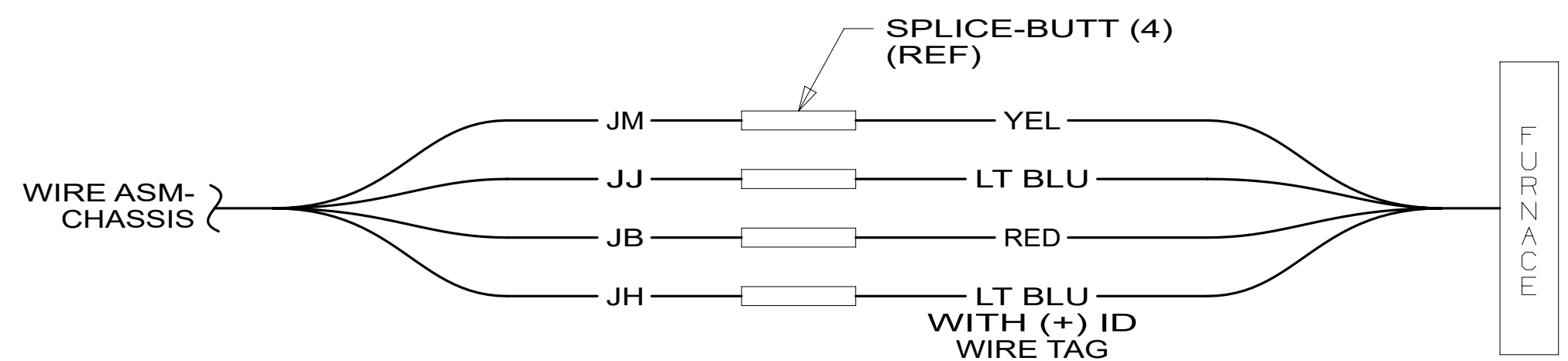


- 9 REMOVE PAINT AND UNDER COATING FROM GROUND BOLT AND NUT TO INSURE PROPER CONTACT. TORQUE TO 25.0 NM ± 2.5 NM.
- 8 RUN ALL CABLES THROUGH GROMMET BEFORE SEALING.
- 7 COVER SHARP EDGES WHERE WIRE CROSSES FRAME RAILS.
- 6 SEE WIRING INSTL-FRONT END FOR ADDITIONAL INFORMATION.
- 5 CLAMP 83610-01-000, SCREW G11-10-16U.
- 4 SEE BATTERY INSTL FOR ADDITIONAL INFORMATION.
3. WIRE TIE 8343-04-000. FASTEN EVERY 600MM MINIMUM.
2. ALL DIMENSIONS ARE FROM DATUM UNLESS OTHERWISE SPECIFIED.
1. SECURE CONDUIT 41953, TAB AS REQUIRED, OVER ALL WIRES IN CONTACT WITH SHARP EDGES.

NOTES:



DETAIL AA

CC

INDICATES A CRITICAL CHARACTERISTIC. ENSURE PROPER PROCEDURES ARE FOLLOWED.

SC

INDICATES A SIGNIFICANT CHARACTERISTIC. ENSURE PROPER PROCEDURES ARE FOLLOWED.

KC

INDICATES A KEY CHARACTERISTIC. ENSURE PROPER PROCEDURES ARE FOLLOWED.

FOR ELECTRICAL TORQUE SPECIFICATIONS SEE DWG NO. 128783-01-000

X-X

FOR ELECTRICAL CALLOUTS SEE DWG 000228177 344479-01-000

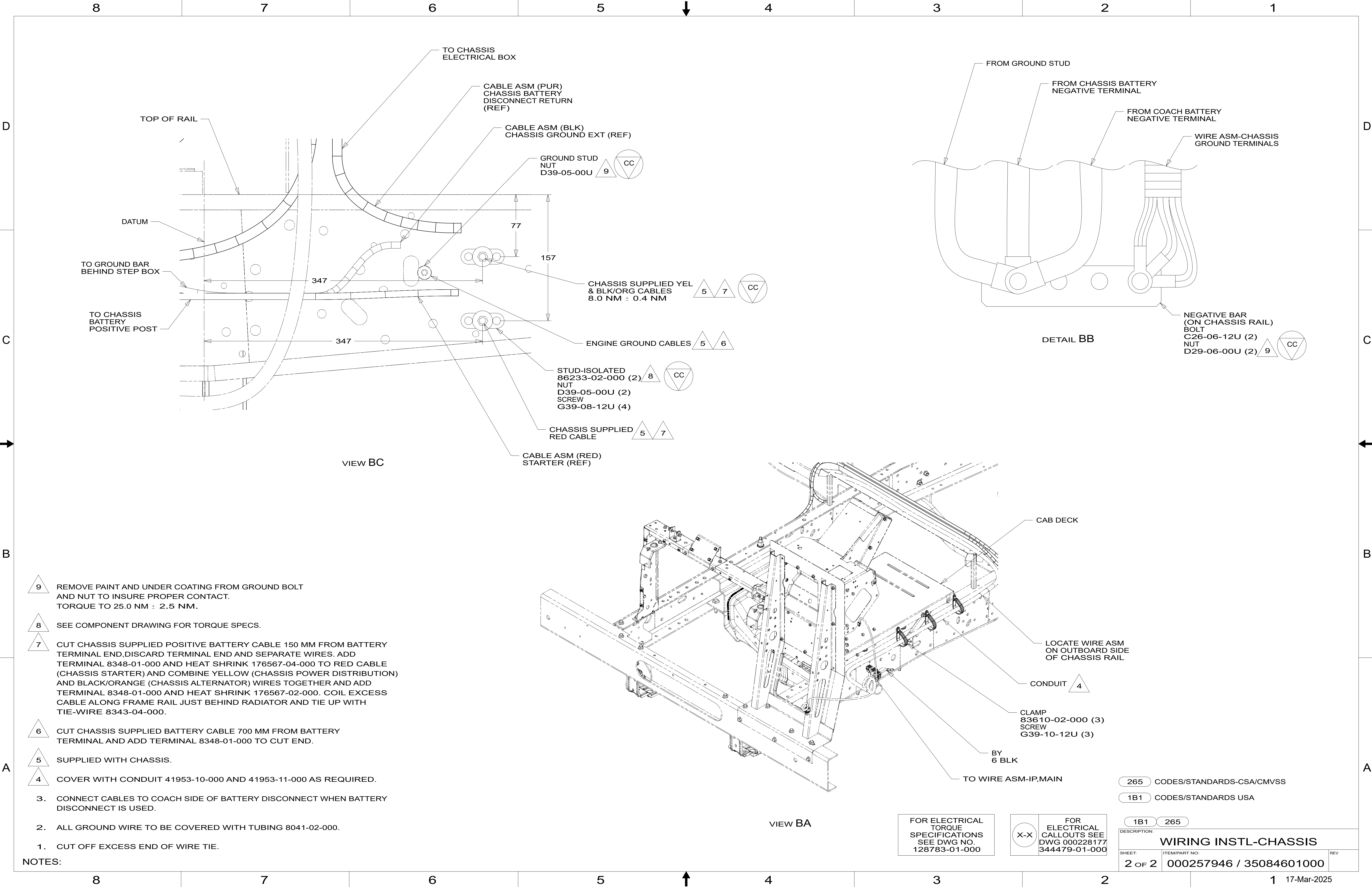
- 52B GEN-5.5KW RVMP LP/GAS
- 52W GEN-5.5KW RVMP CARB
- 52K GENERATOR,CARB COMPLIANT
- 52L GENERATOR,NON-CARB COMPLIANT
- 52P GEN-5.5KW ONAN-GAS-MARQ GOLD
- 265 CODES/STANDARDS-CSA/CMVSS
- 1B1 CODES/STANDARDS USA

1B1265

COPYRIGHT 2024 WINNEBAGO INDUSTRIES, INC.

DSNR:		ALL DIMENSIONS ARE IN MILLIMETERS	
DFTR:			
UNSPECIFIED TOLERANCES:		MATERIAL:	
WHOLE DIM (X)	± 3		
ONE-PLACE (X.X)	± 1.5		
TWO-PLACE (X.XX)	± 0.50		
ANGLE	± 1°		
REFER TO ES0018 FOR FASTENER TIGHTENING GUIDELINES		WEIGHT: (LBS)	FIRST USED:
			22 F34W
DESCRIPTION: WIRING INSTL-CHASSIS			
SHEET: 1 OF 2	ITEM/PART NO: 000257946 / 35084601000	REV	

REF: 1 17-Mar-2025



- 9 REMOVE PAINT AND UNDER COATING FROM GROUND BOLT AND NUT TO INSURE PROPER CONTACT. TORQUE TO 25.0 NM ± 2.5 NM.
- 8 SEE COMPONENT DRAWING FOR TORQUE SPECS.
- 7 CUT CHASSIS SUPPLIED POSITIVE BATTERY CABLE 150 MM FROM BATTERY TERMINAL END,DISCARD TERMINAL END AND SEPARATE WIRES. ADD TERMINAL 8348-01-000 AND HEAT SHRINK 176567-04-000 TO RED CABLE (CHASSIS STARTER) AND COMBINE YELLOW (CHASSIS POWER DISTRIBUTION) AND BLACK/ORANGE (CHASSIS ALTERNATOR) WIRES TOGETHER AND ADD TERMINAL 8348-01-000 AND HEAT SHRINK 176567-02-000. COIL EXCESS CABLE ALONG FRAME RAIL JUST BEHIND RADIATOR AND TIE UP WITH TIE-WIRE 8343-04-000.
- 6 CUT CHASSIS SUPPLIED BATTERY CABLE 700 MM FROM BATTERY TERMINAL AND ADD TERMINAL 8348-01-000 TO CUT END.
- 5 SUPPLIED WITH CHASSIS.
- 4 COVER WITH CONDUIT 41953-10-000 AND 41953-11-000 AS REQUIRED.
3. CONNECT CABLES TO COACH SIDE OF BATTERY DISCONNECT WHEN BATTERY DISCONNECT IS USED.
2. ALL GROUND WIRE TO BE COVERED WITH TUBING 8041-02-000.
1. CUT OFF EXCESS END OF WIRE TIE.

NOTES: